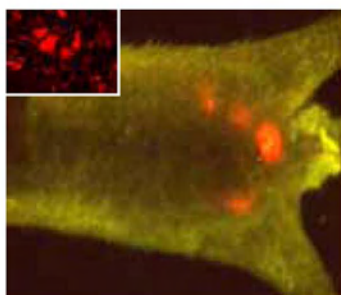
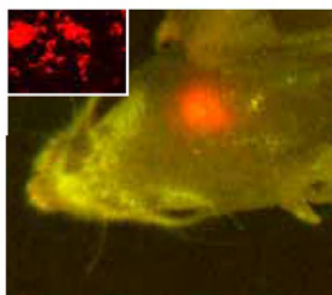


Introducing Fluorescent Protein Expressing Cancer Cell Line Collection!

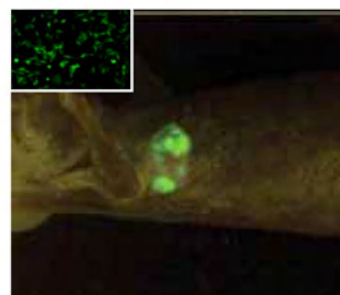
Examples of cancer cell lines available



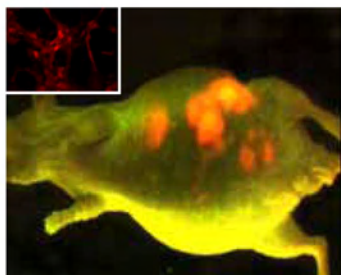
Prostate cancer PC-3-RFP



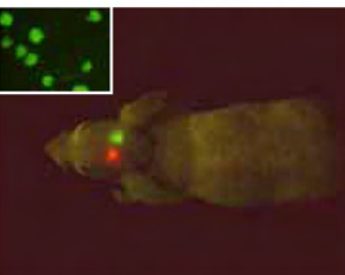
Glioma U87-RFP



Breast cancer MDA-MB-435-GFP

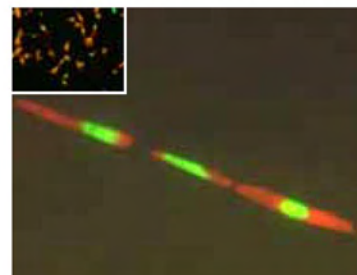


Pancreas cancer MIA-PaCa-2-RFP



Dual-color imaging

Glioma U87-RFP and GFP



Imaging in microvessels and capillarie

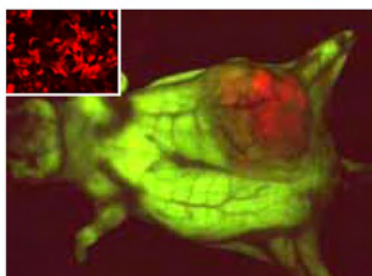
Fibrosarcoma HT1080-GFP-RFP

GFP tumor in RFP mouse



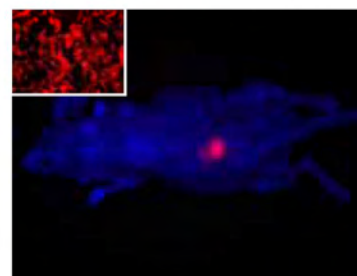
Colon cancer HCT-116-GFP

RFP tumor in GFP mouse



Colon cancer HCT-116-RFP

RFP tumor in BFP mouse

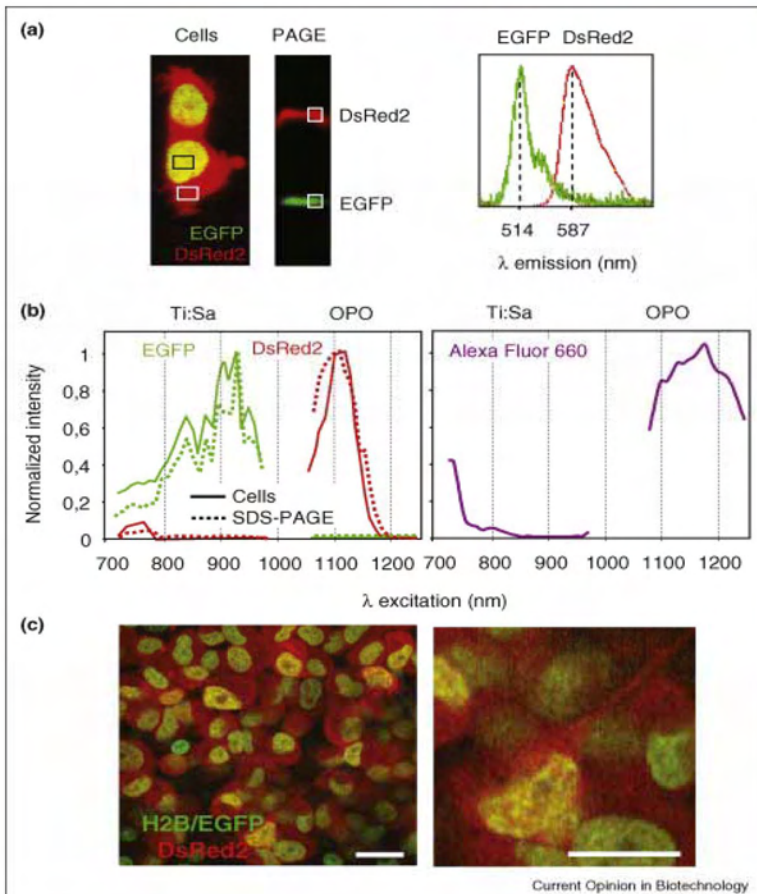


Pancreas cancer XPA1-RFP

**For pricing or more information,
contact a UVP Biolmaging Specialist or Dealer**

Available fluorescent protein-expressing cancer cell lines

Tumor Type	Cell Line	GFP	RFP	Dual-Color	Tumor Type	Cell Line	GFP	RFP	Dual-Color
Prostate, Human	PC3	X	X	X	Ovarian, human	CHOK1 C38	X		
	DU145	X		X		OVCAR-8	X		
	LnCap	X	X			RGMI#186	X		
Prostate, Rat	Dunning3327		X			OVCAR-3	X	X	
Melanoma, mouse	B16 F10	X	X			SKOV3	X		
	B16F0	X	X			CAOV3	X		
Melanoma, human	LOXMI VI	X	X			TOV21	X	X	
	Sk-mel-5	X	X			Hep2	X	X	
	FEMX 1	X	X			FaDu	X	X	
	UACC257	X				SNB-19	X		
Lung cancer, human	MV3	X	X	X		324	X		
	H460	X	X			U87 MG	X	X	
	HOP-62	X			DAOY	X	X		
	EKVX	X			SCC-25	X			
	Anip 973	X			Bx Pc3	X	X		
Lung cancer, mouse	A549	X	X		MIA-Paca 2	X	X	X	
	Lewis Lung	X	X	X	ASPC-1	X	X		
Colon cancer, human	HCT-116	X	X	X	Cfpaca	X			
	colo205	X			Capan	X			
	SW620	X			Capan-2	X			
	Ls180	X			PaCa28	X			
	HCT-8	X	X		XPAI			X	
	HCT-15	X			R40LN		X		
	KM-12	X			R90P		X		
	WiDr	X			R90L		X		
	HT29	X	X		Bladder	HTB 9	X		
	SW1116	X	X		UC 14	X			
	cancer, mouse	Colon 38	X	X		KU-7	X		
		SL4	X	X		UM-UC-3	X		
	Breast cancer, human	MDA-MB-435	X	X	X	T24T			X
		MDA-MB-435 2C5	X	X		NUGC 4	X	X	
MDA-MB-435 4A4		X	X		NUGC 4 MDR	X			
MDA-MB-231		X	X		MEKN45				
MDA-MB-468		X	X		N87	X			
MDA-MB-453		X			OST	X	X		
MX-1		X	X		143 B	X	X		
MCF-7		X			HMMG/HOS	X	X		
BT 474		X			SOSN2	X	X		
MMT 060562		X	X		L-SLM	X			
Breast cancer, mouse	4T1	X	X	X	HT 1080	X	X	X	
	4T1.2erB2	X			Hep 3B	X			
	SN12C	X	X		Hep G2	X	X		
Renal, human	A498	X	X		SK-Hep-1	X	X		
					MOLM13	X			
					KM 28 BM	X			
					OPM2	X			
					CEM		X		
					U957	X			
					HEC-1-B	X			
					Multiple myeloma	RPMI8226	X		



Example of a dual-color fluorescent protein-expressing cancer cell line

(a) HT-1080 cells expressing cytoplasmic DsRed2 and Histone-2B-EGFP before and after SDS-PAGE under native conditions. The square boxes indicate the regions where the spectra were taken from. **(b)** 2-photon excitation spectra of EGFP, DsRed2, and Alexa Fluor 660. The solid lines represent the isolated protein in SDS-PAGE or soluble Alexa Fluor 660 and the dashed lines living dual-color cells. The calculated efficiency to excite DsRed2 at 1100 nm was 20-fold higher compared with excitation at 760 nm. **(c)** Simultaneous excitation of EGFP at 830 nm and DsRed2 at 1100 nm in live, non-fixed HT-1080 dual-color cells. Bars, 20 μ m. (Andresen V, et al. *Curr Opin Biotechnol* 20, 54-62, 2009).

**For pricing or more information,
contact a UVP BiImaging Specialist or Dealer**



Web Site: www.uvp.com
UVP, LLC, Upland, CA | (800) 452-6788 | (909) 946-3197
E-Mail: info@uvp.com
Ultra-Violet Products Ltd., Cambridge UK
Tel: +44(0)1223-420022 | **E-Mail:** uvp@uvp.co.uk