

Fluor Camera and zoom lens

Screen tilts for optimum viewing angle and live preview of images

CompactFlash memory card port



Dedicated fluorescence and colorimetric imaging in a stand-alone gel documentation

No computer required with this system! If transfer of images to your computer is required, transfer images in a flash with the Compact Flash USB connector (PC or MAC).

Overhead LED white light with Hi/Lo settings

Touch pad control of:

- 17 integration times
- Save options: tiff or jpeg
- Oversaturation warning

Wide door for access and placement of samples on the transilluminator surface; UV automatically shuts off when the door is opened

Darkroom mounts onto the transilluminator

Choose from a large selection of benchtop models from single UV, 2UV, 3UV and FirstLight

BioDoc-It Imaging System is an all in one gel documentation package.

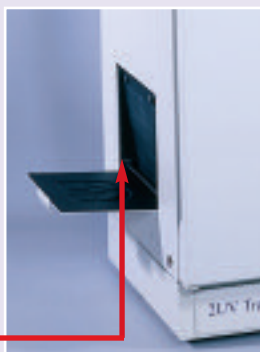
UV blocking viewport for quick sample viewing without opening the door

System Components

- Darkroom, compact with wide access door
- Overhead white light
- Gel viewer window, UV blocking
- UV Transilluminator (variety available)
- Emission filter: EtBr (others available)
- CCD Camera (Fluor Camera) and zoom lens
- CompactFlash Memory Card and USB connector

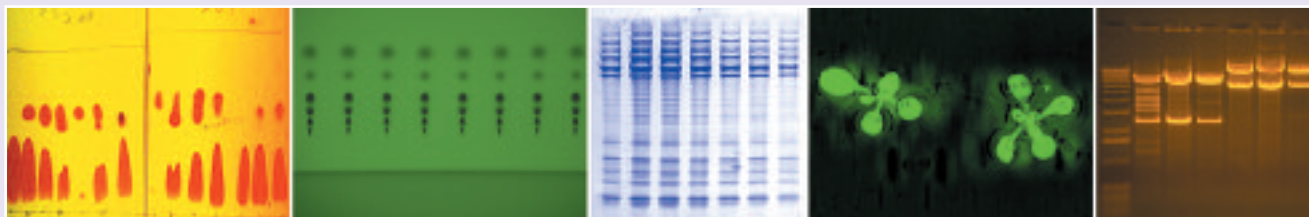


EtBr filter fits in the easy access tray; other filters are available and interchangeable



"Three door" models include side access ports for positioning gels without opening the door

Fluor Camera. Monochrome non-cooled CCD camera for laboratories performing routine electrophoresis of DNA and protein gels.



Basic fluorescence and colorimetric imaging in a compact stand-alone

1



Fluor Camera and lens connect directly to the processor

Camera mounts onto the light-weight hood enclosure area; allows images up to 20x20cm

Carry handles for portability



The VisiDoc-It is a basic, economical image capture and gel documentation system and allows researchers to use a transilluminator already in their laboratory. Two configurations are available: 1) with a hood enclosure or 2) with a stand.

No computer is required with this stand-alone system.

Processor, LCD screen, capture and integration options are the same as the BioDoc-It

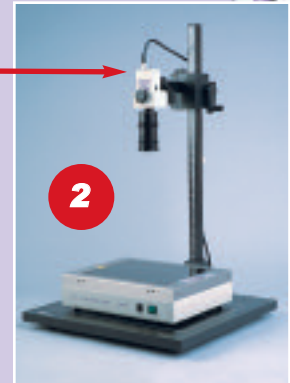
Transilluminator is ordered separately. Select from compact Benchtop UV or large format High Performance models.

BioDoc-It BioImaging System
VisiDoc-It BioImaging System

Fluor Camera

Camera mounts to the camera stand

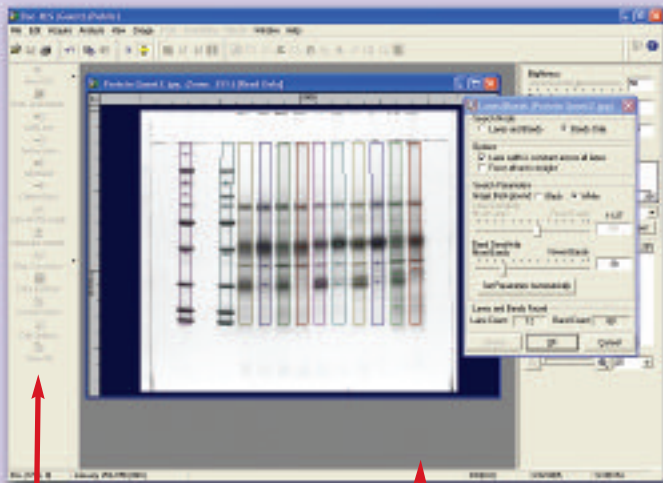
Optional transilluminator fits on the base; Choose from High Performance or Benchtop UV transilluminator models



2

Doc-ItLS Analysis Software

Basic analysis software for gels, plates and colonies



Users set tools bars for their preferences

Doc-ItLS software is compatible with Windows 2000 or XP Pro

Doc-It®LS is recommended for use with images captured with UVP's basic gel imaging systems: BioDoc-It, VisiDoc-It, DigiDoc-It, MultiDoc-It and ChromaDoc-It. Analyze the gels with the easy to use Doc-ItLS software featuring:

- One-touch button click for selecting lanes and bands
- Automated Colony counting
- Enhance images with tools including annotation, image noise reduction and pseudo color
- Support for 21 CFR Part 11 compliance with image history and user information
- Generation of easy to interpret quantitative data of lanes and bands
- Create and personalize reports
- Export data to external software applications